

**1. How does your body grow as you get older?**

- A. Your cells fill with water, and get bigger
- B. Your cells divide, producing new cells
- C. Your cells elongate
- D. Your cells combine with one another

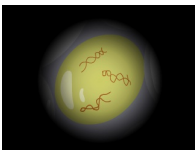
**2. Mitosis begins in which cell organelle?**

- A. The endoplasmic reticulum
- B. The mitochondria
- C. The cytoplasm
- D. The nucleus

**3. How does the number of chromosomes in a daughter cell compare to the number of chromosomes in a parent cell?**

- A. The daughter cell has one-half the number of chromosomes
- B. The daughter cell has twice the number of chromosomes
- C. The daughter cell has the exact same number of chromosomes
- D. The daughter cell has one-quarter the number of chromosomes

**4. What is a chromosome?**



- A. A small piece of a cell membrane
- B. A pair of DNA molecules
- C. The protein center of a cell
- D. Part of the cell's endoplasmic reticulum

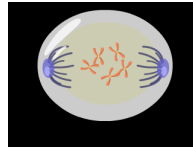
**5. How is mitosis in plant cells different from mitosis in animal cells?**

- A. Plant cells have rigid cell walls and no centrioles
- B. Plant cells don't undergo mitosis
- C. Plant cell mitosis is much slower
- D. Plant cell mitosis is much faster

**6. What are the four stages of mitosis?**

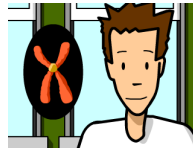
- A. Anapest, protophase, multiphase, and telephase
- B. Prophase, metaphase, anaphase, and telophase
- C. Adenine, guanine, thymine, and cytosine
- D. Phase 1, Phase 2, Phase 3, and Phase 4

**7. When do spindle fibers first become visible?**



- A. Telophase
- B. Metaphase
- C. Anaphase
- D. Prophase

**8. What is the name of the following structure?**



- A. Center
- B. Centromere
- C. Centriole
- D. Centralia

**9. What happens at the very end of mitosis?**

- A. The cell membrane splits
- B. The nucleus splits again
- C. The chromosomes divide
- D. Centrioles appear

**10. Where do duplicated chromosomes line up during metaphase?**

- A. Against the cell wall
- B. Against the cell membrane
- C. In the center of the cell
- D. At either end of the cell