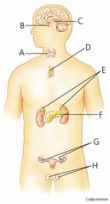


Quizlet

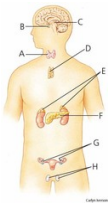
NAME _____

5 Written questions

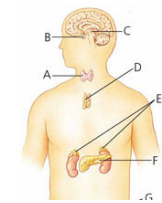
1. located just above the kidneys; produces hormone that regulates blood sugar level



2. produces cells for immune system



3. all the endocrine glands of the body.



4. Swelling, fever, WBC rush to the area

5. Non-specific response

5 Matching questions

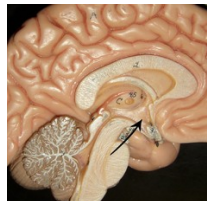
1. ____ Adrenalin

2. ____ Antidiuretic hormone (ADH)

3. ____ Allergies

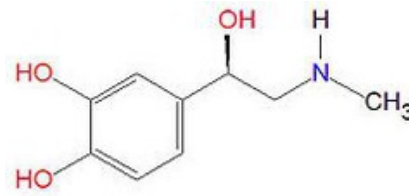
4. ____ First Line of Defense

A. a portion of the brain that constantly checks the internal environment of the body.



5. ____ Hypothalamus

B. a hormone produced in the adrenal glands; Used in the fight or flight response. Increases heart rate and breathing rate.

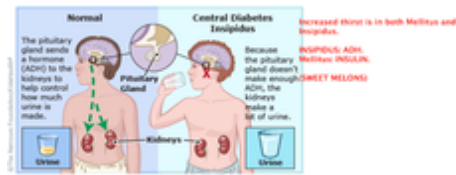


C. Barriers to prevent pathogens getting in the body

D. A reaction to something that is not dangerous (i.e. pollen)

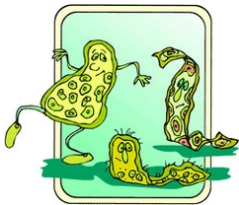


E. a hormone that controls the amount of urine produced by the body.



5 Multiple choice questions

1. aka: germs- these cause infectious diseases



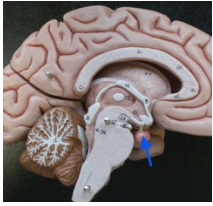
- A. Antibodies
- B. Allergies
- C. Pathogen
- D. Thyroid

2. "eats" and destroys pathogen



- A. Endocrine glands
- B. Antibodies
- C. White blood cell
- D. Third line of Defense

3. the endocrine gland that controls the activities of other endocrine glands; it is often called the master gland.



- A. Adrenal glands
- B. Endocrine glands
- C. Pituitary gland
- D. HIV and AIDS

4. cells, tissue, and organs that fight to defend our bodies



- A. Immune system
- B. Endocrine system
- C. Bacteria
- D. Antibiotic

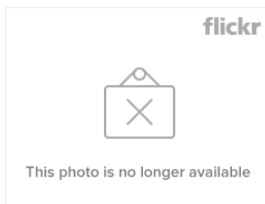
5. Helps your body create antibodies



- A. Vaccination
- B. Target cells
- C. Homeostasis
- D. Antibodies

5 True/False questions

1. attach to, and kill, specific pathogens



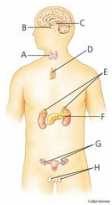
→ Antibodies

- True
- False

2. Non-living pathogen → Epidermis

- True
- False

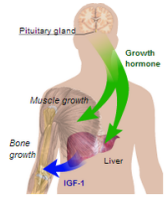
3. secretes thyroxin, controls metabolic rate



→ Pathogen

- True
- False

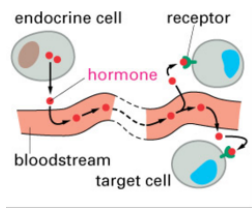
4. chemical substances that act as messengers in the body.



→ Hormones

- True
- False

5. glands that produce hormones.



→ White blood cell

- True
- False