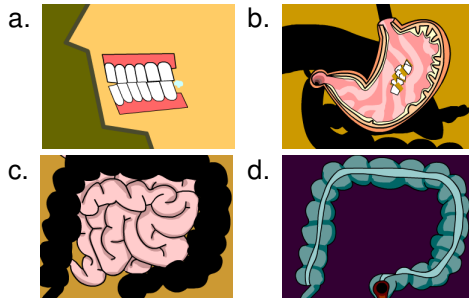


1. Why do we need to break apart the food we eat?

- a. So it can fit into our stomachs
- b. So our bodies can use the nutrients from the food
- c. So liquids can be separated from solids
- d. So that our bodies' enzymes have something to do

2. Where does digestion begin?



3. Chewing is an example of what kind of digestion?

- a. Dental
- b. Fragmentary
- c. Chemical
- d. Mechanical

4. If you wanted to find the glands that produce salivary amylase, where would you look?

- a. In your mouth
- b. In your throat
- c. In your intestines
- d. In your stomach

5. Place the following events in sequence: A) Food enters your large intestine; B) Food enters your small intestine; C) Food enters your esophagus

- a. A, B, C
- b. C, B, A
- c. C, A, B
- d. B, A, C



6. Hydrochloric acid is a caustic chemical that can burn your skin — and yet it exists in your stomach. How can this be?

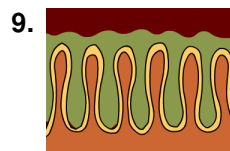
- a. Your small intestines absorb all the hydrochloric acid
- b. The food in your stomach absorbs all the acid
- c. Your stomach lining protects you against burns
- d. The hydrochloric acid in your stomach is different from the hydrochloric acid you'd find in a chemistry lab

7. What is chyme?

- a. A particular type of digestive enzyme
- b. What food is called after it's been digested by the stomach
- c. A chemically active part of the small intestines
- d. The passage that leads from the small intestine to the large intestine

8. What might happen if you had your pancreas removed?

- a. Your intestines might have trouble breaking down food
- b. Your stomach might have trouble producing hydrochloric acid
- c. You would not be able to chew properly
- d. You would have trouble producing saliva



9. What is the main function of villi?

- a. They move food from the stomach to the small intestine
- b. They absorb nutrients into the bloodstream
- c. They absorb water from chyme
- d. They move food from the small intestine to the large intestine

10. What might happen if your large intestine did not absorb water from chyme?

- a. You couldn't digest food
- b. You wouldn't be able to go to the bathroom
- c. You'd become dehydrated
- d. Solid waste couldn't be moved to the rectum