

DIGESTIVE SYSTEM.

ORAL CAVITY_A

TEETH_B

TONGUE_C

SALIVARY GLAND_D

PHARYNX_E

ESOPHAGUS_F

UPPER GASTROINTESTINAL TRACT★

STOMACH_G

SMALL INTESTINE★

DUODENUM_H/JEJUNUM_{H'}/ILEUM_{H²}

LOWER GASTROINTESTINAL TRACT★

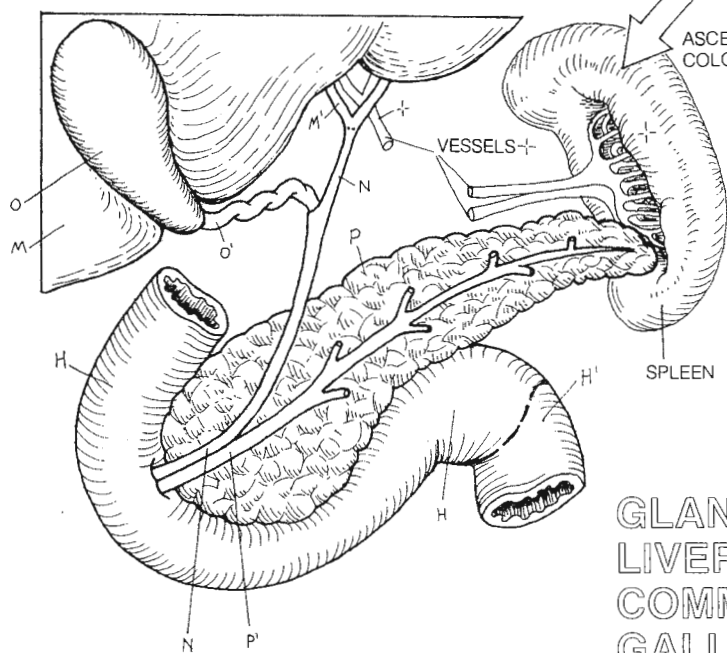
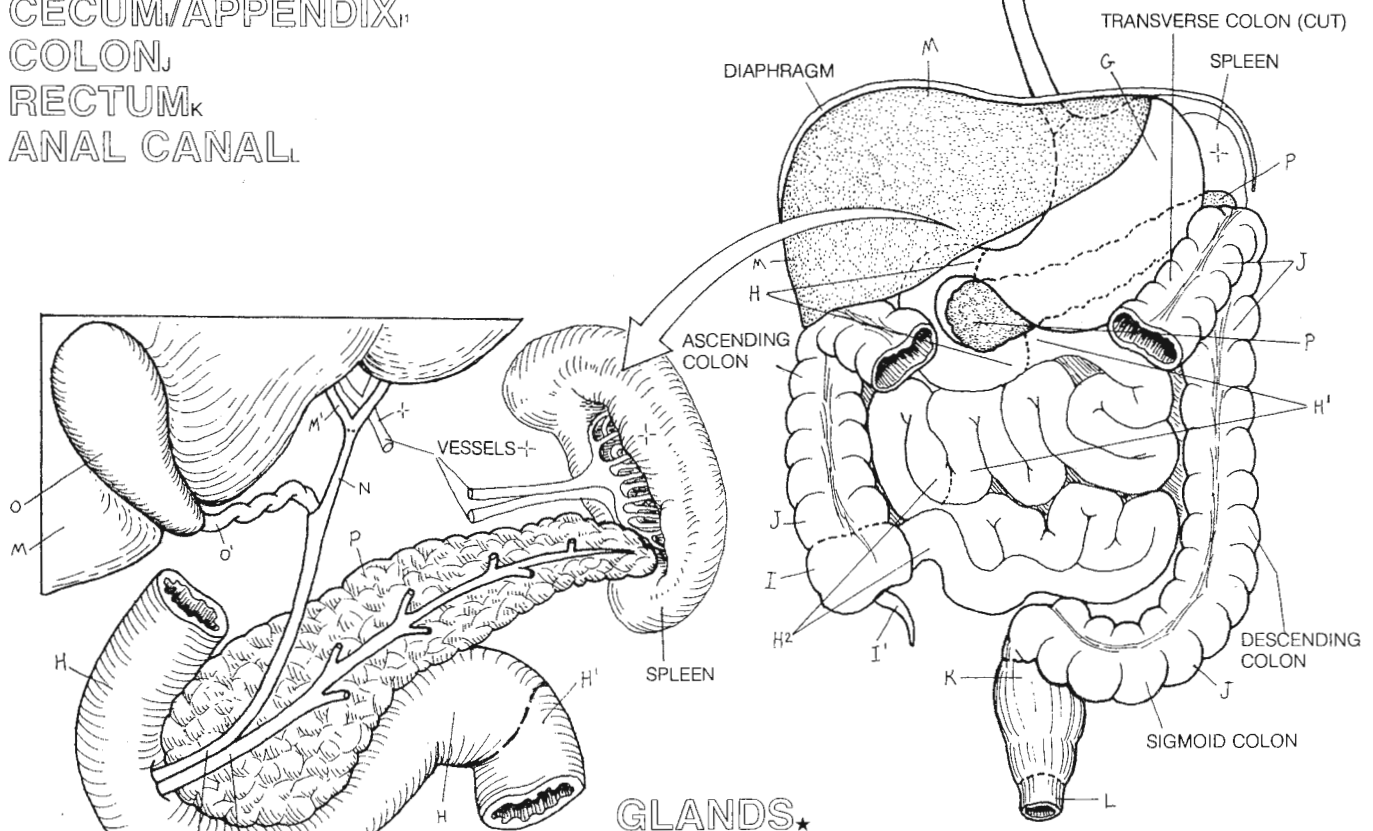
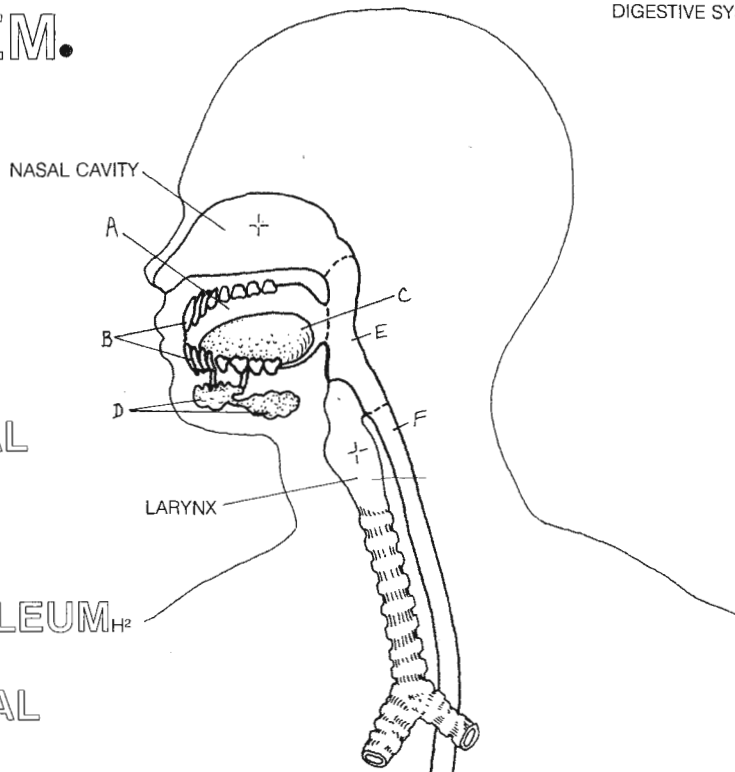
LARGE INTESTINE★

CECUM/APPENDIX_I

COLON

RECTUM_K

ANAL CANAL



GLANDS★
 LIVER_M/HEPATIC DUCT_{M'}
 COMMON BILE DUCT_N
 GALLBLADDER_O/CYSTIC DUCT_{O'}
 PANCREAS_P/DUCT_{P'}