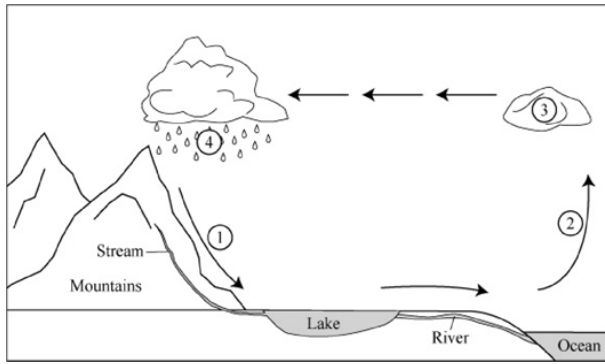


GCS Grade 7 Science Benchmark 1 Study Guide

1. What are the two most abundant gases in the atmosphere? What else makes up our atmosphere?
2. How does air pressure change as you go up in the atmosphere? Why?
3. List the layers of the atmosphere in order of increasing altitude.
4. Label the parts of the water cycle in the diagram below



5. What are the four main types of clouds? Draw a picture of each and write what type of weather they bring.
6. What is the source region of an air mass?
7. The boundary between two air masses is called a _____.
8. Describe the four types of fronts and the weather you would expect with each.
9. What is the Coriolis Effect?
10. Winds typically move from _____ to _____ across the United States.
11. What relative humidity? Can warm air or cold air hold more water vapor?
12. What is dew point?
13. Meteorologists use _____ to measure air pressure, _____ to measure humidity, _____ to measure temperature and _____ to measure wind speed.
14. What are isobars? What are isotherms?

GCS Grade 7 Science Benchmark 1 Study Guide

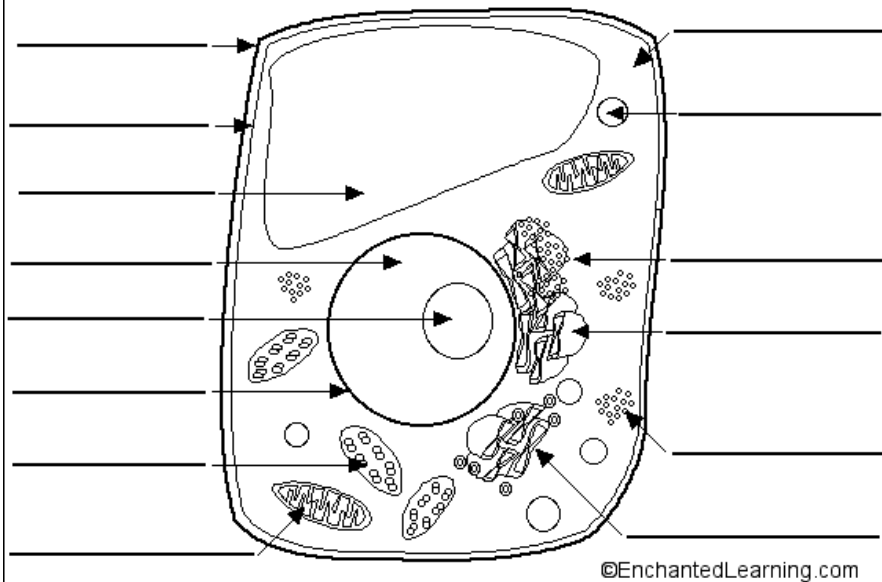
15. On a weather map, a capital “H” means _____ and an “L” means_____.
16. What is ozone? Where is it located?
17. What happens when ozone is ground-level?
18. Describe the greenhouse effect. What gases are greenhouse gases?
19. What are fossil fuels? What is the problem with using them excessively?
20. List three forms of alternative energy.
21. Describe three negative effects of air pollution.
22. Write three ways we can reduce air pollution.
23. Who is credited with the development of cell theory? (May be more than one scientist)
24. What is Cell Theory?
25. Label the parts of the microscope in the diagram below.



GCS Grade 7 Science Benchmark 1 Study Guide

26. Label the parts of the cells in the diagrams below and describe each organelle's function.

Cross-Section of a Plant Cell



Cross-Section of an Animal Cell

